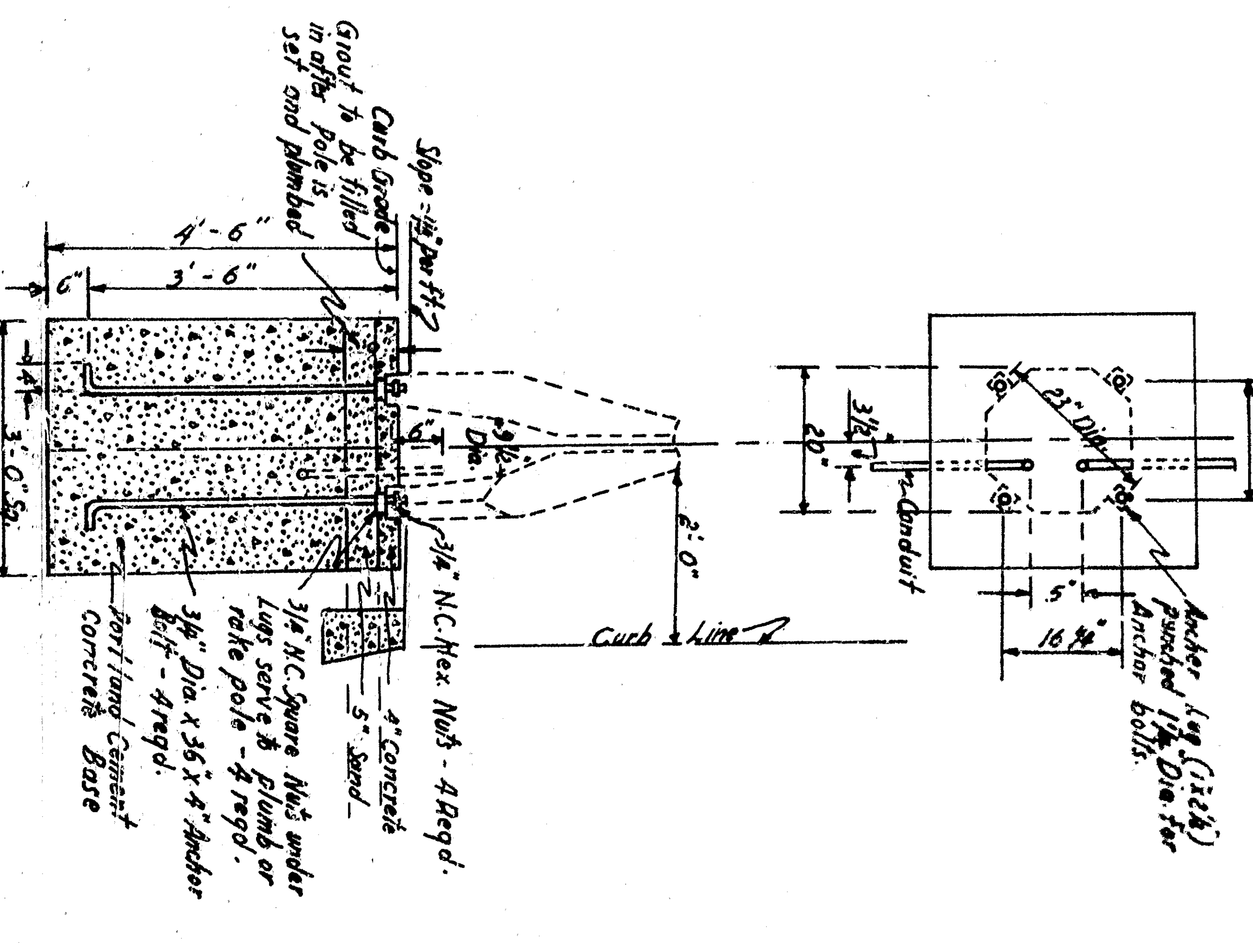


NOTES:
 1 Pole installed with door to curb
 2 Conduit located to permit installation of the transformer in base of pole

NOTE: Existing upright Electroliers are Pacific Union Model Type 1912

ELECTROLIER FOUNDATION
 1 Typical when existing upright Electroliers are to be relocated
 2 When existing type 1912 Electroliers are to be replaced with present type 1912's shall be used.



APPROVED	DATE	1942	STREET LIGHTING PLAN SHEET 4
DRAWING NO.	7766	CITY ENGINEER NO.	8774
CHECKED BY	STANA	RECOMMENDED BY	2747
DEPARTMENT OF ENGINEERING CITY OF SAN BERNARDINO BASE LINE STREET Between H. Street and Waterman Avenue (Waterman)			